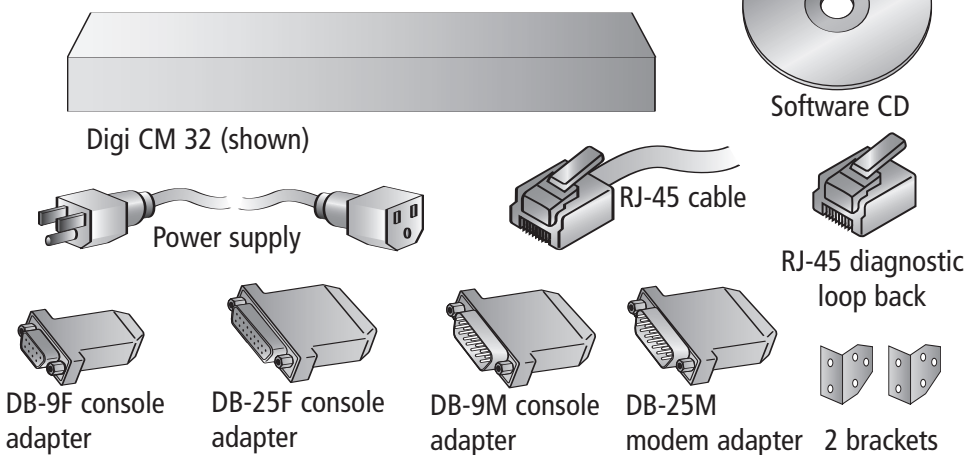


1 Verify kit contents

a Verify that your kit contains one each of the following components:



A free hard copy of the User Guide can be ordered at: www.digi.com/csuserguide



Quick Start Guide

Digi CM™

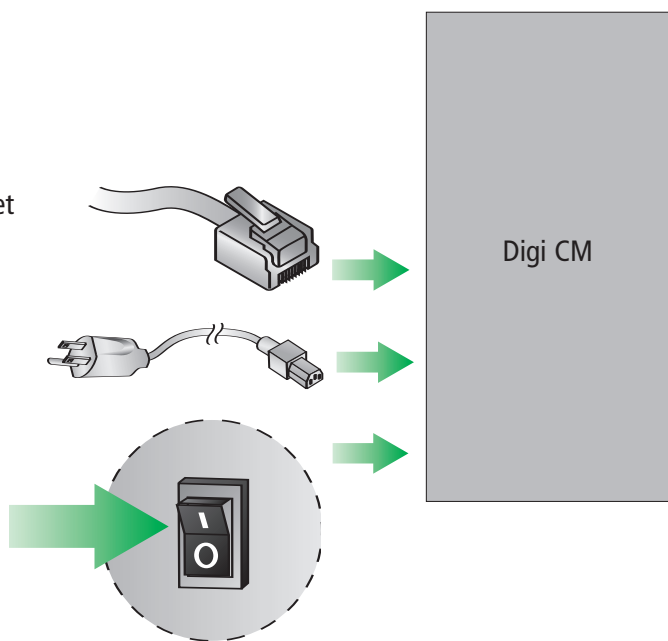
PN:(1P)90000300_C

2 Connect hardware

a Connect Ethernet cable

b Connect power supply

c Switch power on

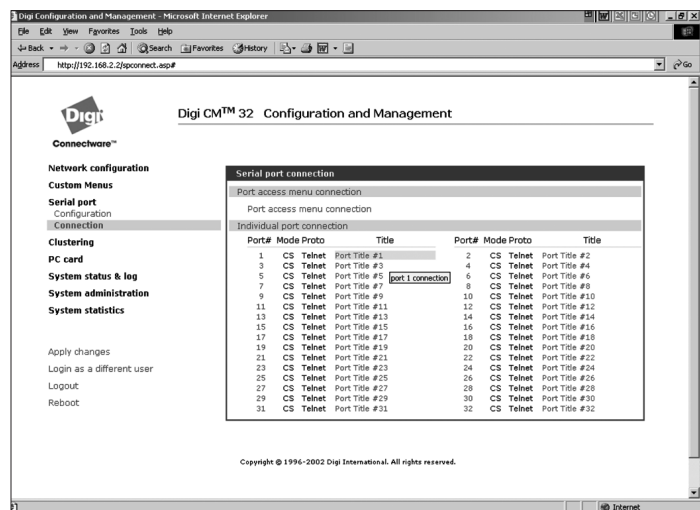


4 Test configuration

a Insert RJ-45 diagnostic loop into Port # 1

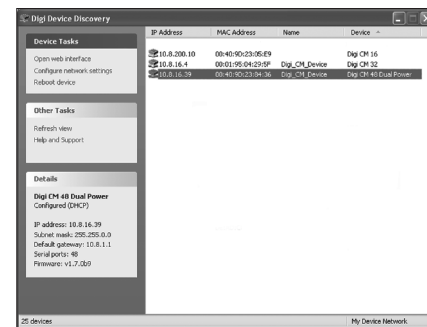
b Enter:
User ID root
Password dbps

c On the left navigation bar, Click Serial Port > Connection > Port Title #



3 Assign network settings

a From the CD, run the Advance Device Discovery Protocol application to locate the Digi CM on the network. In firmware 1.8 and greater, the CM has SNMP, SSHv1, and Telnet to the command line disabled by default, and http is automatically redirected to https. To perform initial device configuration, use the discovery tool on the CD (also available from the Digi website) or use our straight-thru serial cable with the appropriate adapter to the CM console port, https, or SSHv2

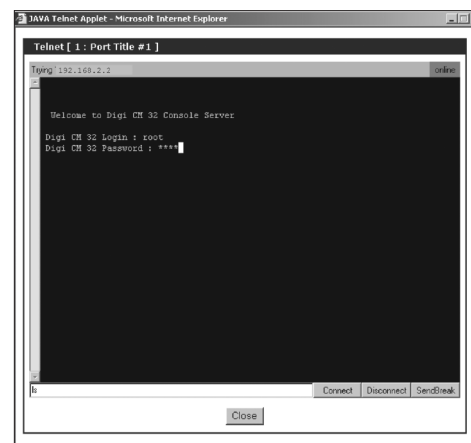


- Are you a POWER USER? Use the configuration menu
1. Establish a serial connection through the console port (9600, 8, N, 1).
 2. Login as `root` and password `dbps`.
 3. Type the command `configmenu`. Select Option 1. Network Configuration and follow the prompts.
 4. Enter the IP address in the URL address bar of your browser and go to step 4 Test configuration.

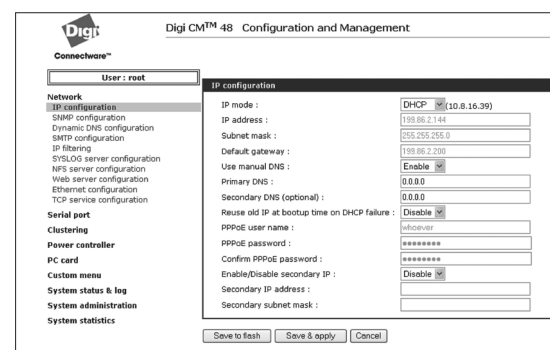
d Log in to port 1
Username root
Password dbps

Verify your connection to the port by typing some text. If the text appears correctly on the screen, the configuration is correct.

Click Close to exit port.



e **Congratulations!**
You have successfully installed your Digi CM. Configure the device for your application using your browser. To get back to your Digi CM after your initial configuration, enter the IP address in the URL address bar and log in. Use the navigation bar on the left to alter your configuration.



Connection	Adapters (in quantities of 8)	Order #	Application
	DB-9F Console adapter	76000671	Bay Accelar, Nortel and other DB-9 DTE
	DB-25F Console adapter	76000673	DTE devices with DB-25 male ports
	DB-25M Modem adapter	76000670	DCE devices such as modems
	DB-25M Console adapter	76000672	Sun SPARC and other DTE devices with DB-25 female ports