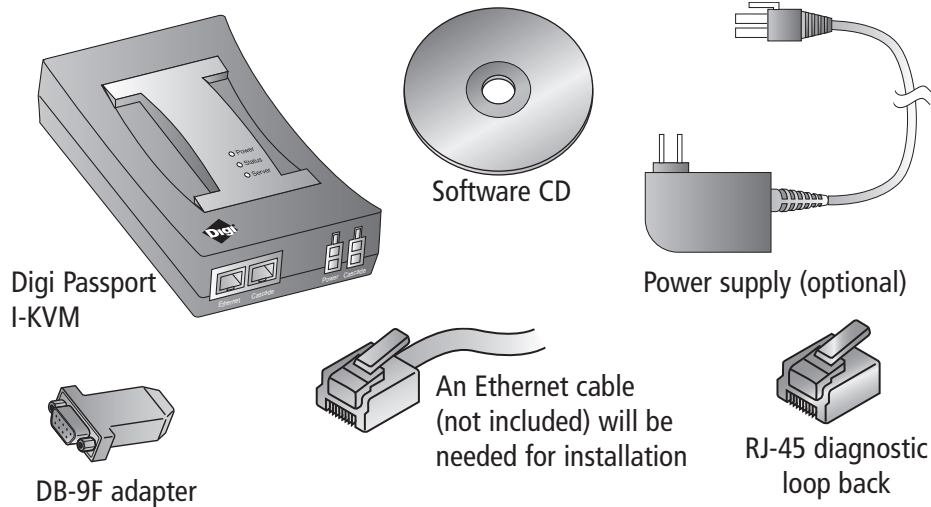


# 1 Verify kit contents

**a** Verify that your kit contains one each of the following components:

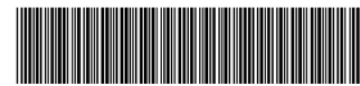


A free hard copy of the User Guide can be ordered at: [www.digi.com/csuserguide](http://www.digi.com/csuserguide)



# Quick Start Guide

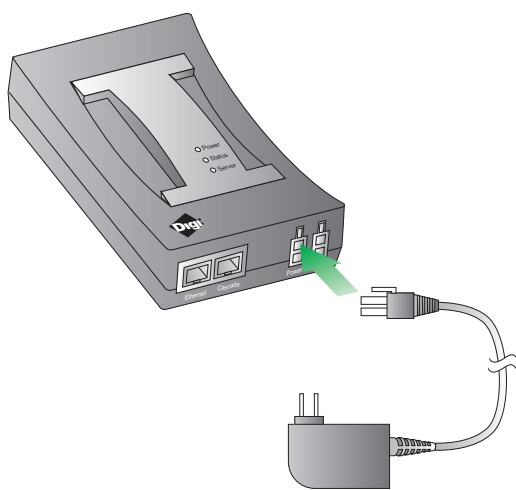
## Digi Passport™ I-KVM



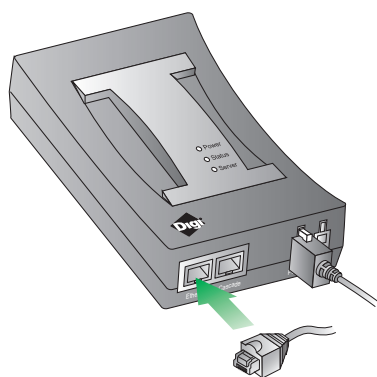
PN (1P): 90001012-88 B

# 2 Connect hardware

**a** Connect power supply

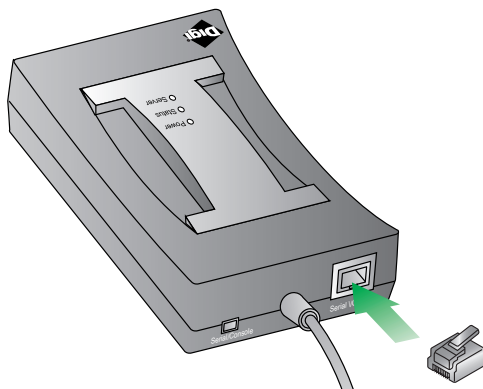


**b** Connect Ethernet cable

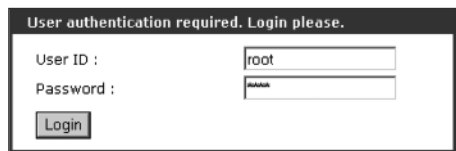


# 4 Test configuration

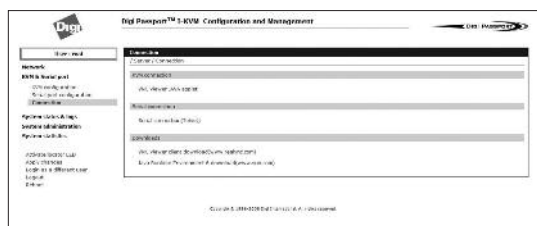
**a** Insert RJ-45 diagnostic loop into Serial/Admin port



**b** Enter:  
User ID `root`  
Password `dbps`



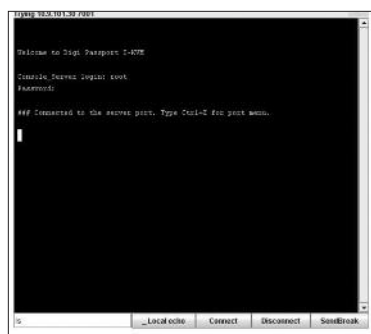
**c** On the left navigation bar, Click KVM & Serial port > Connection > Serial connection



**d** Log in to port 1  
Username `root`  
Password `dbps`

Verify your connection to the port by typing some text. If the text appears correctly on the screen, the configuration is correct.

Click Close to exit port.



# 3 Assign network settings

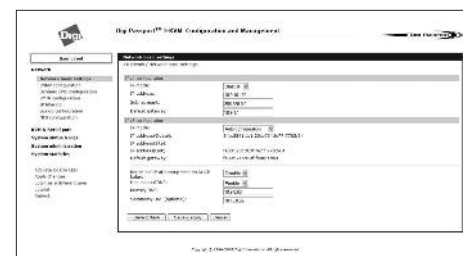
**a** From the CD, run Digi Device Discovery to locate the Digi Passport I-KVM on the network.

The Passport I-KVM has SNMP, SSHv1, and Telnet to the command line disabled by default, and HTTP is automatically redirected to HTTPS. To perform initial device configuration, use Digi Device Discovery (also available from the Digi website) or use our straight-thru serial cable with the appropriate adapter to the Passport I-KVM console port, HTTPS, or SSHv2.



- Are you a POWER USER? Use the configuration menu
1. Establish a serial connection through the console port (9600, 8, N, 1).
  2. Login as `root` and password `dbps`.
  3. Type the command `configmenu`. Select Option 1. Network Configuration and follow the prompts.
  4. Enter the IP address in the URL address bar of your browser and go to step 4 Test configuration.

**e Congratulations!** You have successfully installed your Digi Passport I-KVM. Configure the device for your application using your browser. To get back to your Digi Passport I-KVM after your initial configuration, enter the IP address in the URL address bar and log in. Use the navigation bar on the left to alter your configuration.



Connection	Adapters (in quantities of 8)	Order #	Application
	DB-9M Modem adapter	76000702	DCE devices such as modems with DB9 female ports
	DB-9F Console adapter	76000671	Bay Accelar, Nortel and other DB-9 DTE
	DB-25F Console adapter	76000673	DTE devices with DB-25 male ports
	DB-25M Modem adapter	76000670	DCE devices such as modems
	DB-25M Console adapter	76000672	Sun SPARC and other DTE devices with DB-25 female ports

Other accessories	Order #
US External power supply	76000765
EU External power supply	76000764
US Multi-unit power supply	76000766
EU Multi-unit power supply	76000767
Power cascade cable	76000768