

# Digi ESP™

Integrated Development Environment (IDE) for Digi embedded platforms

## Overview

An integral part of Digi's embedded development kits for NET+OS® and Digi Embedded Linux, Digi ESP is a complete Integrated Development Environment (IDE) optimized for software development on Digi embedded modules and 32-bit NET+ARM processors. The combination of seamless integration with Digi's hardware and software platforms and the ease-of-use of a graphical IDE simplify the development process and dramatically improve overall software design productivity.

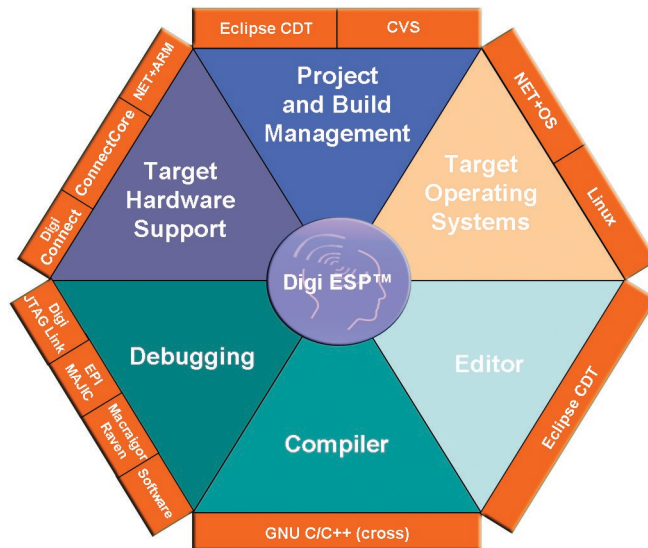
## About Digi ESP

Built on the open Eclipse™ framework, Digi ESP provides an easy-to-use and professional C/C++ development environment with graphical user interface. It includes a source code editor, GNU compiler integration, visual source code debugging, hardware and software debug support, managed make files, and CVS source code version control integration.

Digi ESP offers a wide variety of state-of-the-art development tool features that make embedded development easier and faster than ever before. These include intelligent editor coding aids (syntax highlighting, auto-indent/bracketmatching, code completion assistance), on-the-fly template insertion, powerful C/C++ indexing/search functionality, and simple single-click initiation of project build processes and debug sessions.

Target operating system-specific extension such as the Project Builder in Digi ESP for NET+OS offers simple point-and-click operation, allowing you to create completely functional, customized application framework with ready-to-use software components. Another example is the sophisticated Target Monitor in Digi ESP for Digi Embedded Linux, providing integrated file system upload and inspection capabilities.

Digi ESP supports the target operating system platforms NET+OS and Digi Embedded Linux. The dedicated host operating system for NET+OS is Microsoft Windows, and Linux for Digi Embedded Linux.



## Features/Benefits

Complete and powerful IDE with full integration of Digi software, hardware, and tools

Built on open Eclipse framework

Integrated tutorials and user documentation

Complete kit with Digi ESP integrated development environment plus choice of optional third-party development tools

Included in Digi JumpStart Kits® for NET+OS and Digi Embedded Linux

- Simplifies software development resulting in accelerated and more efficient software design process
- Feature-rich and future-proof; common look-and-feel minimizes effort required to learn new tools
- Easy and direct access to information saves time and effort
- No need to assemble and integrate an embedded development environment – application development can begin immediately
- Optimal and most efficient “out-of-the-box” development experience

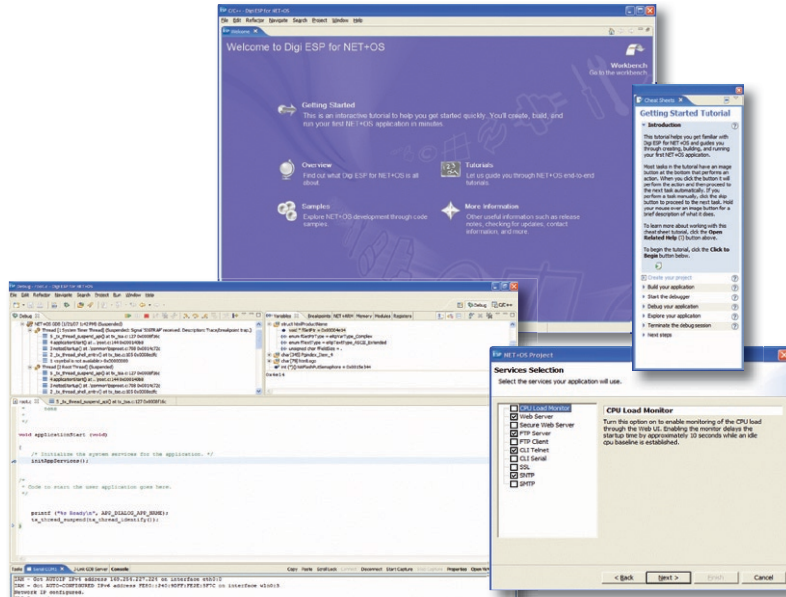


[www.digiembedded.com](http://www.digiembedded.com)



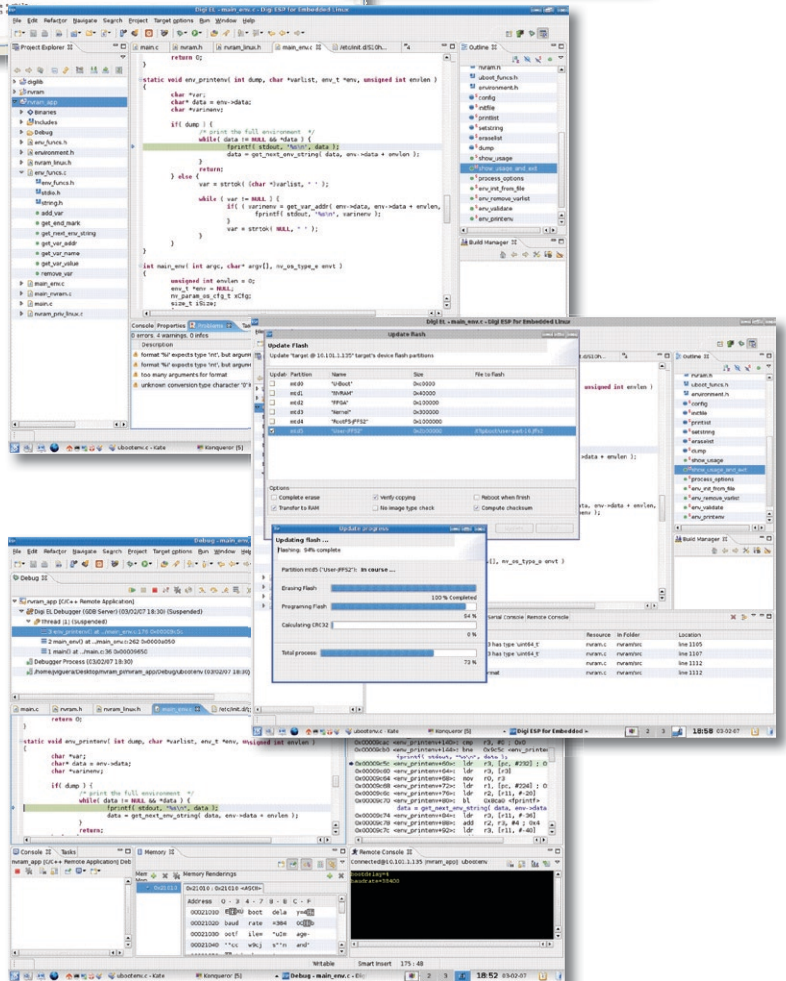
## General

- Editor
  - C/C++ source code editor
  - Color-coded syntax highlighting
  - Intelligent code assist
  - Auto-indent and bracket-match
  - Proactive code completion assistance
  - On-the-fly code template insertion
  - Context-sensitive API help (hover assist and full help)
  - C/C++ search (constructs, declarations, definitions, references, etc.)
- Compiler
  - GNU C/C++ integration
- Debugging
  - Visual source code debugger
  - One-click debug launch
  - Breakpoints (line) and watchpoints (expression)
  - Data inspection/modification
- Memory, registers, variables, signals
  - Disassembler mixed code view
- Project and Build Management
  - Integrated project file navigator
  - Managed and standard make files
  - CVS version control system support



## Digi ESP for NET+OS 7

- Microsoft Windows based host environment
  - Microsoft Windows NT® 4/2000/2003/XP/Vista
- Supported debuggers
  - Digi JTAG Link, EPI MAJIC, Macraigor Raven, software (gdbserver)
- Project builder for ready-to-use application templates
  - CPU load monitor, web server (w/configuration pages), secure web server, FTP server/client, Telnet/serial CLI, SSL, SNMP, SMTP
- Interactive tutorials
  - First project, writing NET+OS applications, using sample applications, deploying an application



## Digi ESP for Digi Embedded Linux

- Linux based host environment
  - Bootable Linux system DVD w/ Digi ESP ("LiveDVD") included
- Target monitor extension
  - File system view, flash update, remote console

## Supported Platforms

- NET+OS 7
- Digi Embedded Linux 4

All hardware platforms supported by the development environments listed are also supported in Digi ESP.

