

# Digi CM™

Console Server

The Digi CM offers secure, reliable in- and out-of-band management for servers, routers, switches, firewalls and other network equipment.



## Overview

The Digi CM provides secure access to any network device, even when the network is down. Users can monitor and control their devices from anywhere using the corporate TCP/IP network, the Internet or dial-up modem connections. This easy-to-use console management tool is ideal for managing servers, routers, switches and any network device with a serial port.

Automatic Device Recognition auto-configures attached devices and populates the Title page with device details. This feature monitors the ports and sends alerts for disconnected or down devices.

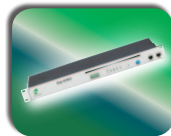
The RemotePorts™ feature enables cost-effective management of up to 48 additional remote devices from a single interface. Additional devices can be managed from the Digi CM using an auxiliary device or terminal server, or from across the network.

The Digi CM, used in conjunction with the Digi Remote Power Manager, offers comprehensive infrastructure management. Users can remotely power on/off connected devices, reboot servers, and receive notifications of changes in power usage, temperature readings, system reboots and more.

### Related Products

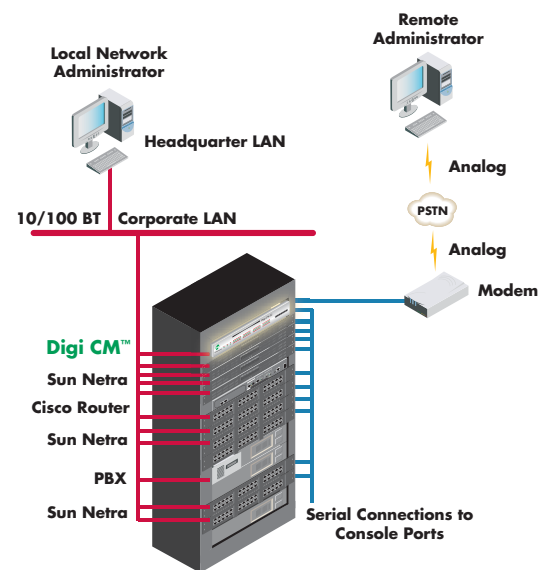


Digi Passport®



Digi Remote Power Manager

### Application Highlight



### Features/Benefits

- Sun, Cisco, IBM, HP, UNIX®, Linux® and Microsoft Windows Server® 2003 compatible
- TACACS+, RADIUS, LDAP, Kerberos, local user database provide centralized authentication
- SSH v2 ensures secure access
- Secure clustering allows multi-server access via one IP address
- Port buffering/logging for easy troubleshooting
- Straight-through CAT5 cabling for easy, hassle-free server connections
- PC Card slot for increased flash, or additional Ethernet/modem connection
- Email/pager alerts and SNMP traps



Platform	Digi CM™ 8	Digi CM™ 16/32	Digi CM™ 48
<b>Features</b>			
Authentication	TACACS+, RADIUS, LDAP, Kerberos, Local user database		
Security	SSHv2 server and client, SSL, IP filtering, Data capture via port buffering		
Management	Command Line, Web (HTTP/HTTPS), SNMP, Multi-level menuing, Port triggers and alerts		
Operating Systems	Embedded Linux (Hard Hat Distribution)		
Connections	Standard CAT5 cabling for RJ-45 serial ports		
Port Access	Telnet/SSH with menuing, Reverse Telnet/SSH, HTTP/HTTPS, Multiple users per port, SSH sessions simultaneously on all ports, IP addresses per port		
Supported PC Cards	CompactFlash memory card, Wireless LAN adapter (802.11b), Ethernet LAN adapter, PSTN/CDMA modem card		
Rack Mount	19" rack mount kit included with 16/32/48-port models. Optional rack mount kit (76000705) available for purchase with 8-port model.		
Memory	64 MB SDRAM, 8 MB Flash		256 MB SDRAM, 16 MB Flash
Dimensions (L x W x D)	9.50 in x 6.25 in x 1.25 in (24.10 cm x 15.90 cm x 3.20 cm)	17.00 in x 8.50 in x 1.75 in (43.20 cm x 21.60 cm x 4.50 cm)	17.50 in x 10.00 in x 1.75 in (44.50 cm x 25.40 cm x 4.50 cm)
Weight	2.50 lb (1.10 kg)	5.80 lb (2.60 kg)	6.40 lb (2.90 kg)
<b>Interfaces</b>			
Serial Ports	8 RJ-45 RS-232	16 or 32 RJ-45 RS-232	48 RJ-45 RS-232
Console Ports	1 RJ-45 RS-232		
Ethernet Ports	1 RJ-45 10/100Base-T		
PC Card Slot	One 16-bit PCMCIA		
<b>Power Requirements</b>			
Power Supply	External 100-240VAC, 50/60 Hz, 12 W max, 6 W typical	Internal 100-240VAC, 50/60 Hz, 40 W max, 12 W typical	
Power Supply MTBF	11 years		
<b>Environmental</b>			
Operating Temperature	5° C to 50° C (41° F to 122° F)		
Storage Temperature	-30° C to +60° C (-20° F to +140° F)		
<b>Regulatory Approvals</b>			
Safety	UL 1950, EN60950		
Emissions/Immunity	CE, FCC Part 15 (Class A), EN55024, EN55022 (Class A)		



PIN	SIGNAL
1	CTS
2	DSR
3	RxD
4	SAFETY GND
5	DCD
6	TxD
7	DTR
8	RTS

**Microsoft**  
**CERTIFIED**  
 Partner



Visit [www.digi.com](http://www.digi.com) for part numbers.

**DIGI SERVICE AND SUPPORT** - You can purchase with confidence knowing that Digi is here to support you with expert technical support and a strong five-year warranty. [www.digi.com/support](http://www.digi.com/support)

**Digi International**  
 877-912-3444  
 952-912-3444  
 info@digi.com

**Digi International France**  
 +33-1-55-61-98-98  
 www.digi.fr

**Digi International KK**  
 +81-3-5428-0261  
 www.digi-intl.co.jp

**Digi International (HK) Limited**  
 +852-2833-1008  
 www.digi.cn

**BUY ONLINE • [www.digi.com](http://www.digi.com)**

91001129  
 J2/1209

© 1999-2009 Digi International Inc. All rights reserved. Digi, Digi International, the Digi logo, Digi CM and RemotePorts are trademarks or registered trademarks of Digi International Inc. in the United States and other countries worldwide. All other trademarks are the property of their respective owners.

