

WisNode Map products are now under WisGate Network Coverage Solutions. View the updated category.

[PRODUCT CATEGORIES](#)[WISBLOCK](#)[RAK12013](#)[DATASHEET](#)

# RAK12013 WisBlock Radar Sensor Module Datasheet

## Overview

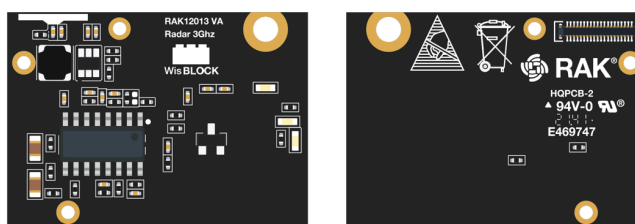


Figure 1: RAK12013 WisBlock Radar Sensor

## Description

RAK12013 is a 3.2GHz microwave radar module based on RCWL-9196. It uses the Doppler radar effect to detect moving objects/motion using microwaves. The RCWL-9196 will transmit and receive a 3GHz radar signal and compare the difference between the two signals to determine whether the object is moving or not.

### NOTE

1. Radar signals don't interfere with other signals such as LoRa, WiFi, and Bluetooth; but multiple radar signals interfere with each other between single individuals over a distance greater than 1 meter.
2. The component side of the PCB module or the front is the positive sensing face, while the opposite side which is the back is the negative sensing face. The negative sensing face is less effective in terms of sensing.

## Features

- 3.3 V Power Supply
- Current Consumption: < 3 uA
- Chipset: RCWL RCWL-9196
- Motion Detection Module

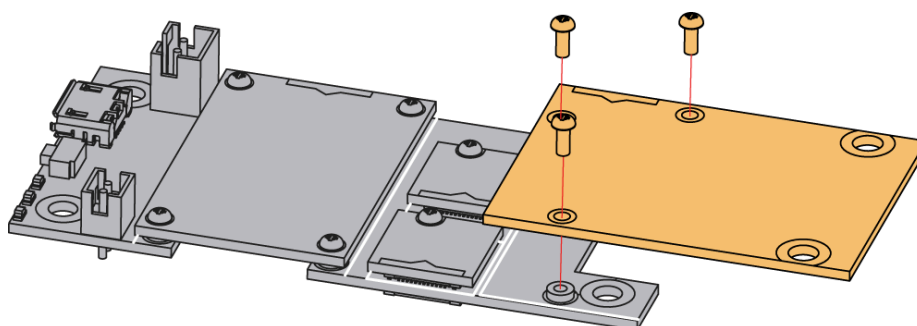
- Detection Distance: 5 - 7 meters
- Detection Area: 360 degrees angle with no blind spot
- Frequency: 3.2 GHz
- Trigger Way: repeat trigger
- Module size: 25 × 35 mm

## Specifications

### Overview

### Mounting

The RAK12013 WisBlock Radar Sensor Module can be mounted to the IO slot of the [WisBlock Base](#) board. **Figure 2** shows the mounting mechanism of the RAK12013 on a WisBlock Base module.



**Figure 2:** RAK12013 Mounting Mechanism on a WisBlock Base Module

### Hardware

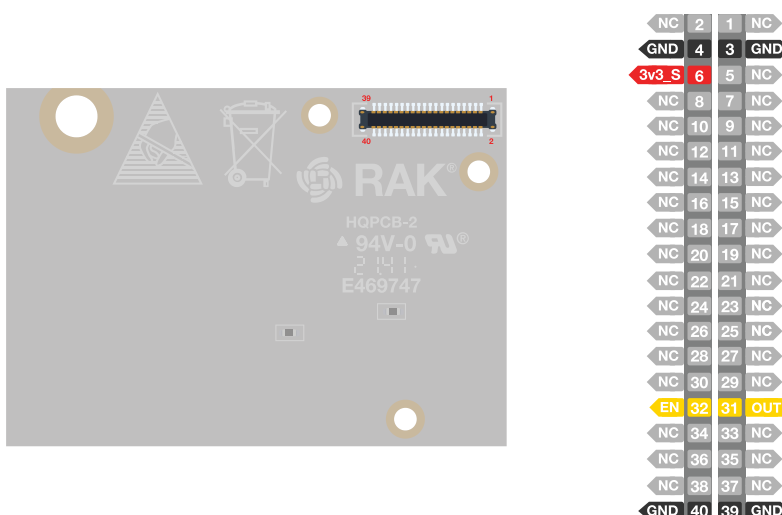
The hardware specification is categorized into five (5) parts. It shows the chipset of the module and discusses the pinouts and their corresponding functions and diagrams. It also covers the electrical and mechanical characteristics that include the tabular data of the functionalities and standard values of the RAK12013 WisBlock Radar Sensor Module.

### Chipset

Vendor	Part number
RCWL	RCWL-9196

### Pin Definition

The RAK12013 module has a 40-pin WisConnector that is compatible to the WisBlock Base IO Slot. The pin order of the connector and the pinout definition is shown in **Figure 3**.



**Figure 3:** RAK12013 Pinout Diagram

#### NOTE

- Only **OUT**, **EN**, **3V3\_S**, and **GND** are connected to the WisConnector.
- **EN** is used to enable the module.
- **OUT** is the output signal from the module.
- **3V3\_S** voltage output from the WisBlock Base that powers the RAK12013 module can be controlled by the WisBlock Core via WB\_IO2 (WisBlock IO2 pin). This makes the module ideal for low-power IoT projects since the WisBlock Core can totally disconnect the power of the RAK12013 module.

## Electrical Characteristics

This section shows the maximum and minimum ratings of the RAK12013 module and its recommended operating conditions. Refer to the table presented below.

### Absolute Maximum Ratings

Parameter	Minimum	Maximum	Unit
3V3_S	-0.3	4.7	V

### Power Supply Ratings

Symbol	Description	Condition	Min.	Nom.	Max.	Unit
VDD	Supply voltage	Input voltage must within this range	2.2	3.3	4.7	V
IDD	Supply current	Normal	-	2.8	3	uA
Power	Transmitting Power	Transmitting Power	-	20	30	mW

## Mechanical Characteristics

### Board Dimensions

Figure 4 shows the mechanical dimensions of the RAK12013 Module.

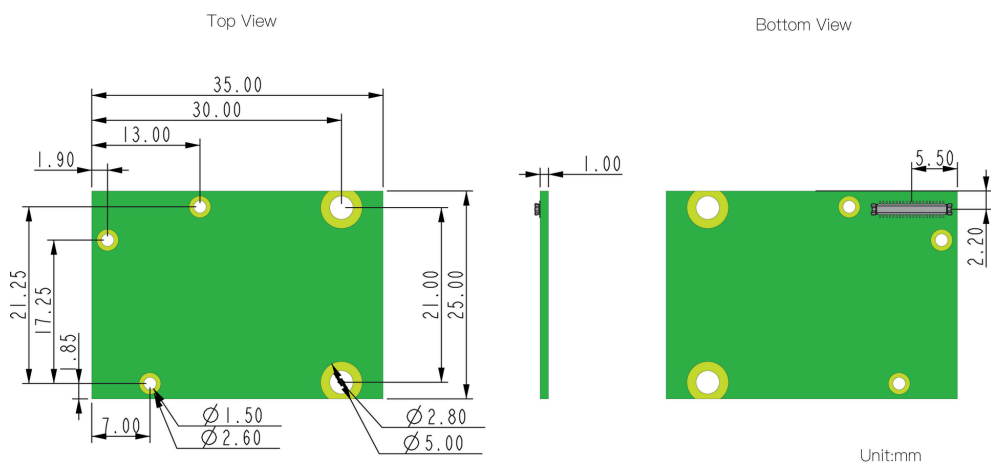


Figure 4: RAK12013 Mechanical Dimensions

### WisConnector PCB Layout

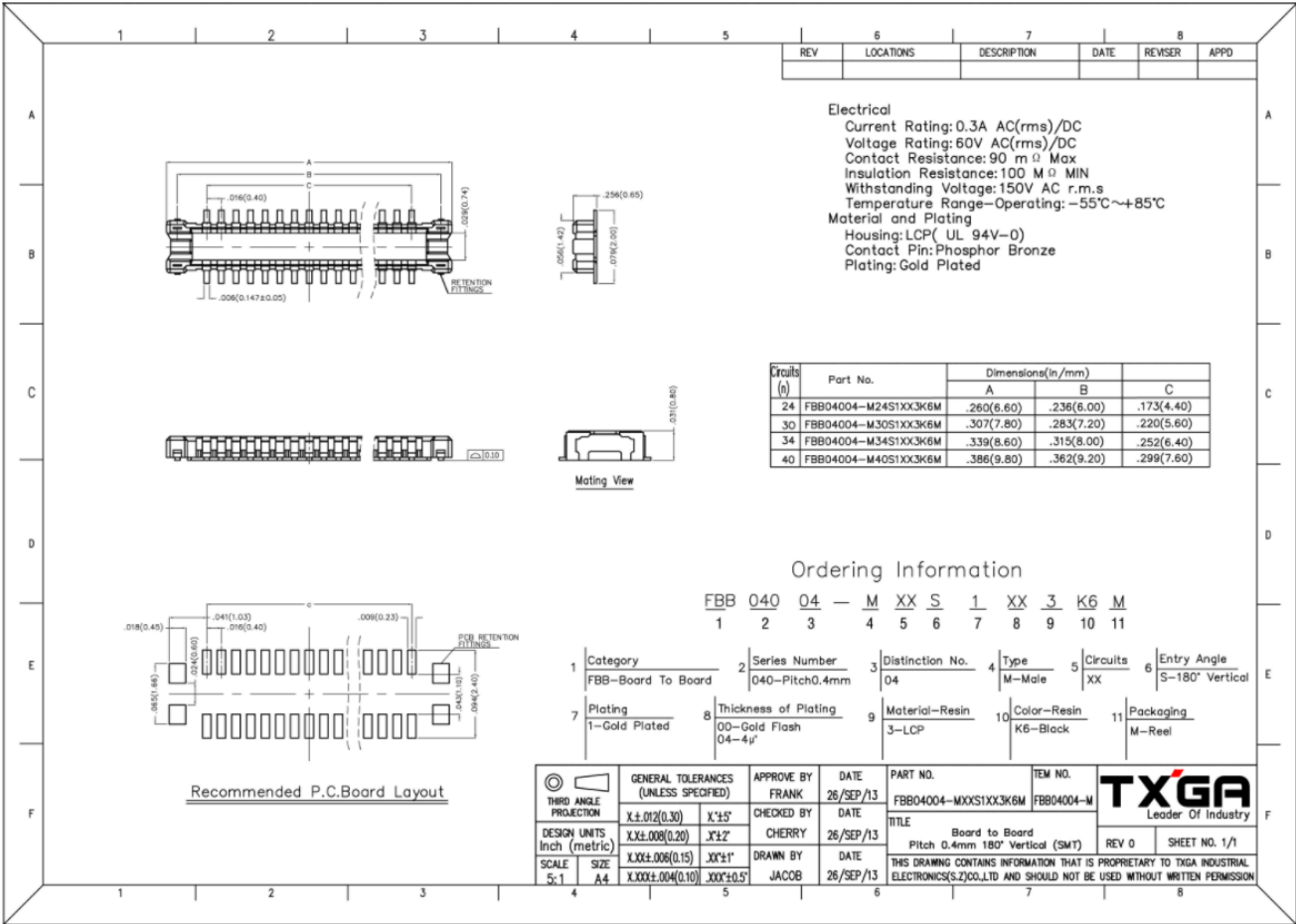


Figure 5: WisConnector PCB Footprint and Recommendations

Schematic Diagram

Figure 6 shows the schematic of the RAK12013 module.

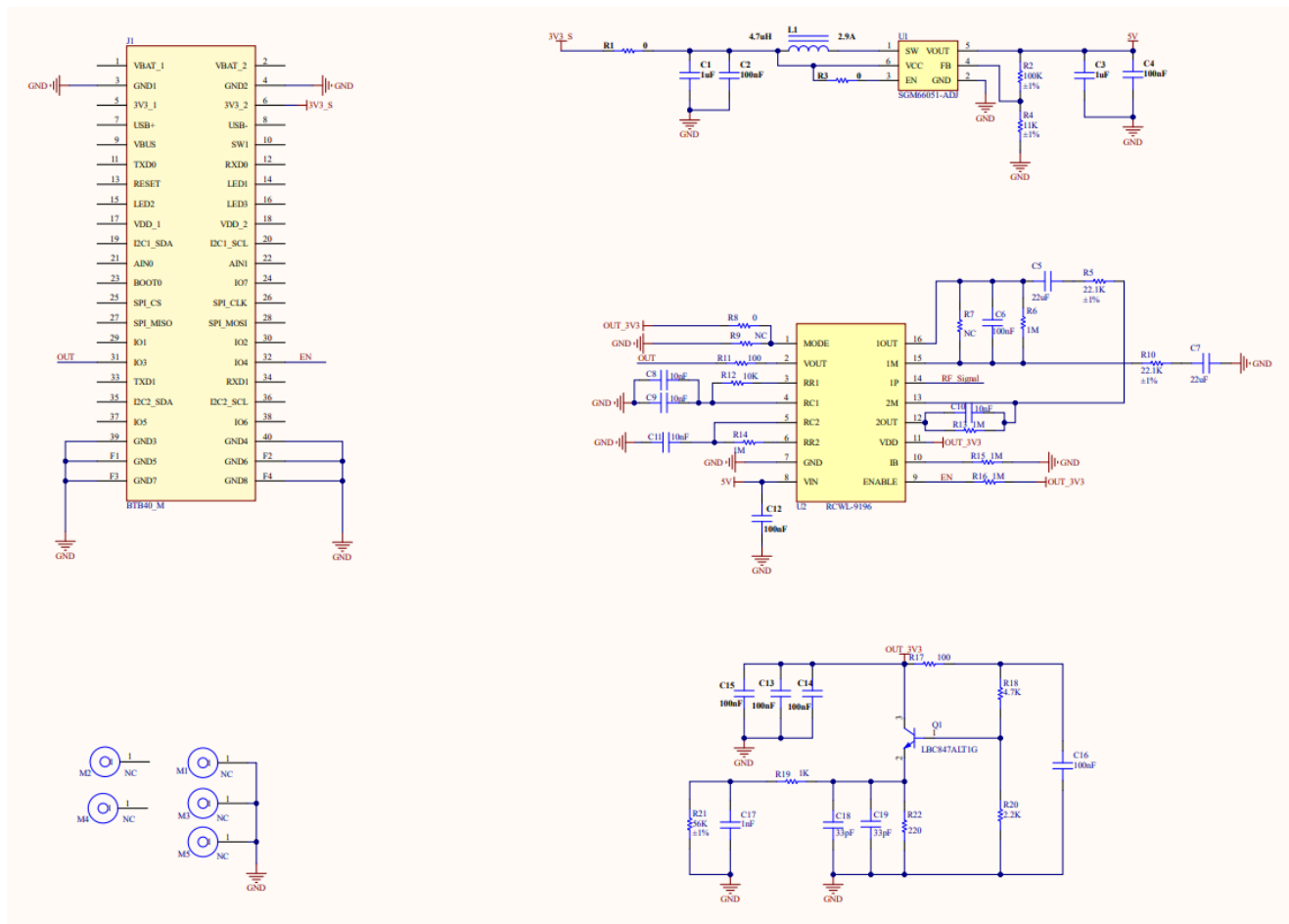


Figure 6: RAK12013 WisBlock Module Schematics

## Boost Converter

The RCWL-9196 operating voltage is 4 V - 24 V. So, you need to boost it from 3.3 V to 5 V.

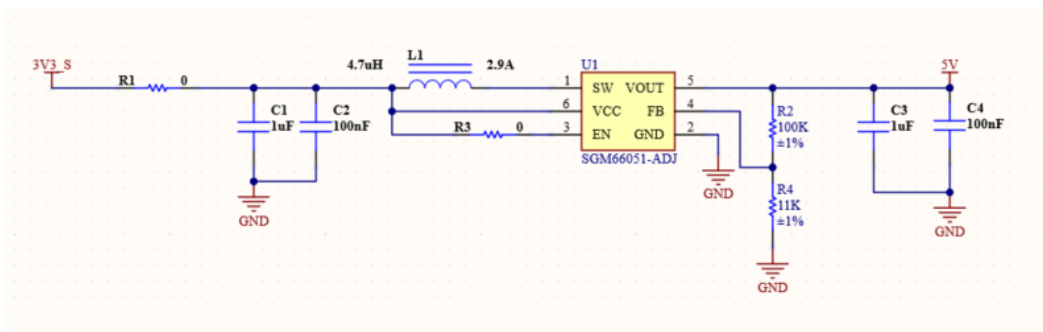


Figure 7: Boost Converter

## RCWL-9196

1. **Pin 1** is used for Mode Select, and **R8** is used as default:

- Mode 0: Non-retriggerable
- Mode 1: Retriggerable

2. **C-TM**: Adjust repeat trigger time (default 2s). To make the trigger repeat time longer, add a capacitor to the solder points of C-TM, and the actual counting trigger time can

operate as follows:

- Stick capacitor on C-TM, test 9196 3-pin frequency (F), and repeat trigger time  $T = (1/f) * 32768$ .

3. **R-GN**: Detection distance adjustment. Connect with a resistor, and the detection distance will become shorter. If no resistor is connected, the default detection distance is 7 meters. If it is connected with a 1 MΩ resistor, the detection distance will become 5 meters. **R7** is NC as default.

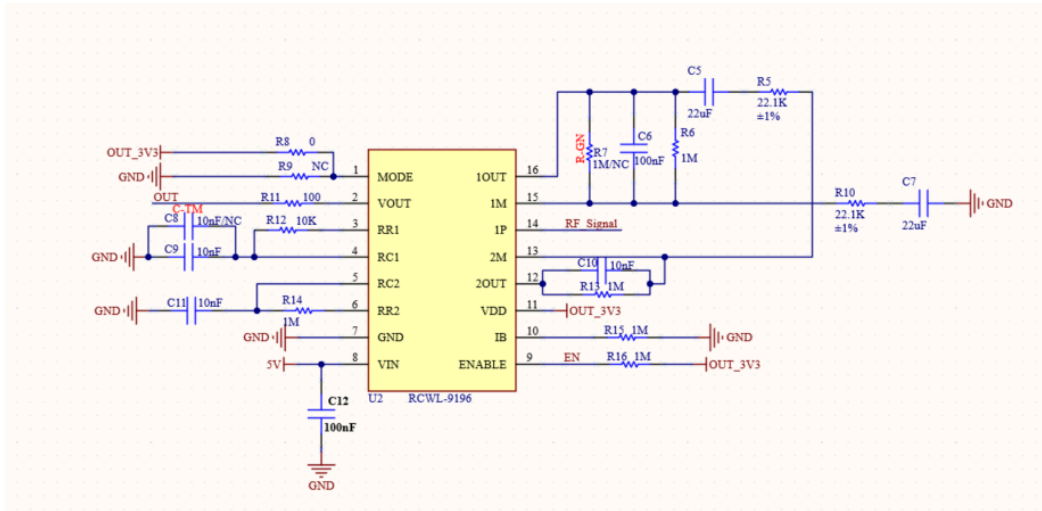


Figure 8: RCWL-9196

## Antenna

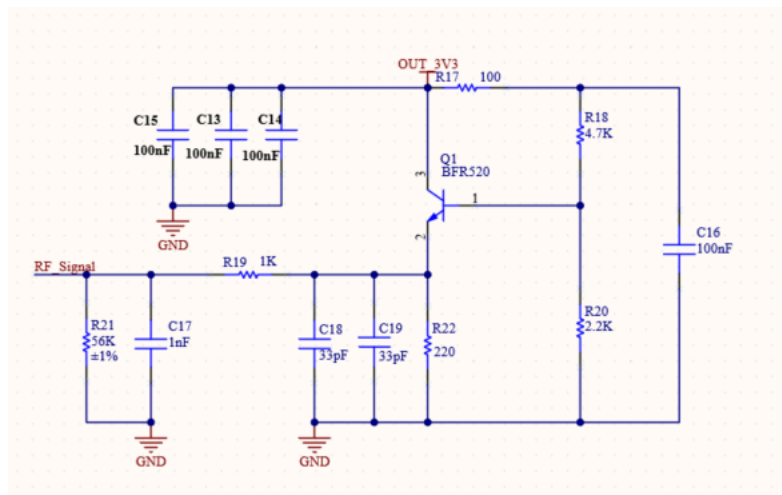


Figure 9: Antenna

Home

« Previous



LoRa® is a registered trademark or service mark of Semtech Corporation or its affiliates. LoRaWAN® is a licensed mark.



Copyright © 2014-2024 RAKwireless Technology Limited.

All rights reserved.

